

梳妆台D79A单桌80/100CM安装图

满意请打5分哦!

宝贝与描述相符 ★★★★★ 5
 卖家的服务态度 ★★★★★ 5
 卖家的发货速度 ★★★★★ 5

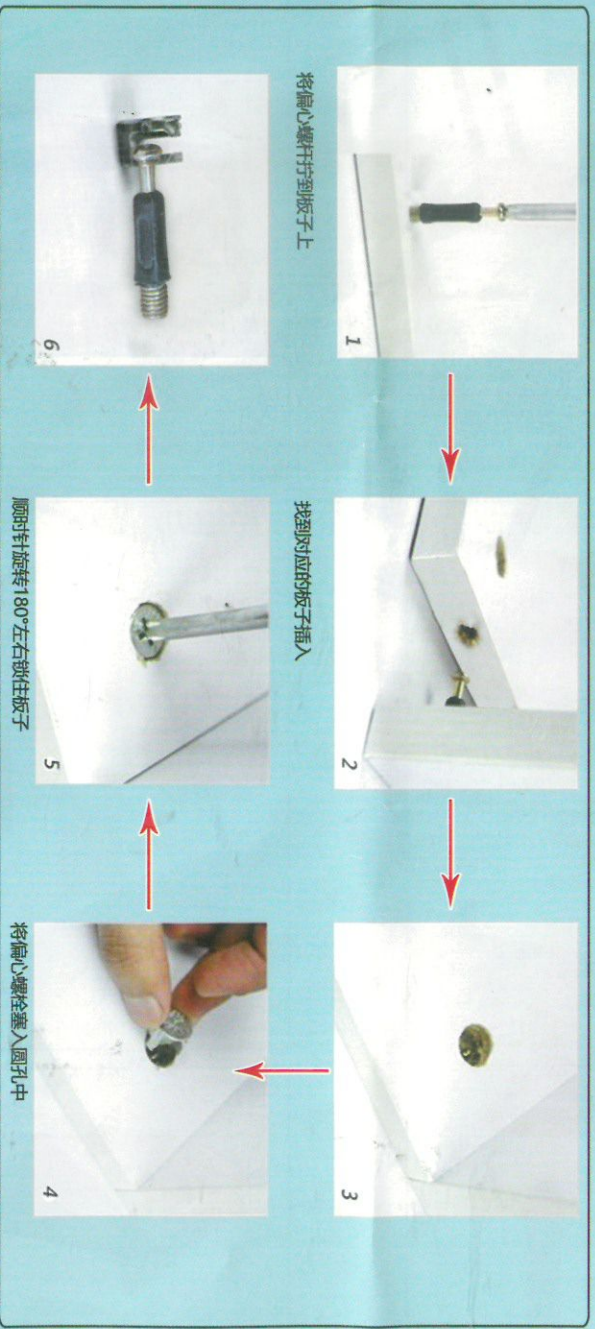


如纸质版安装图看不清，请您微信扫描二维码获取电子版图文说明。

如果有运输破损，请告知客服具体什么配件，让其帮您免费补发!

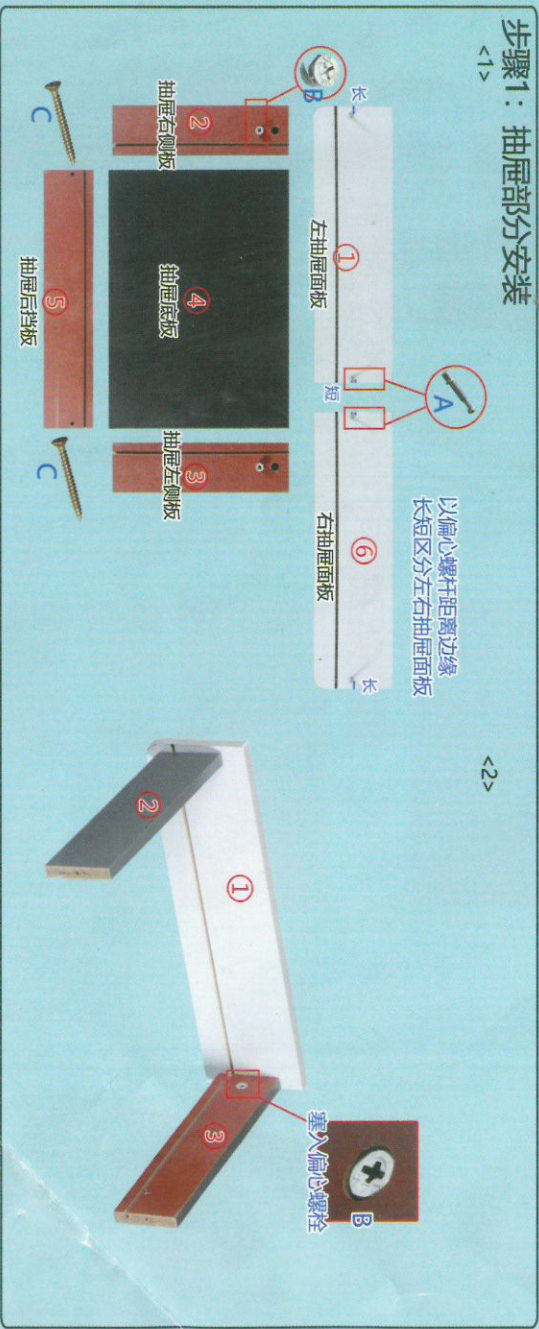
A*6	B*6	C*28	F*4

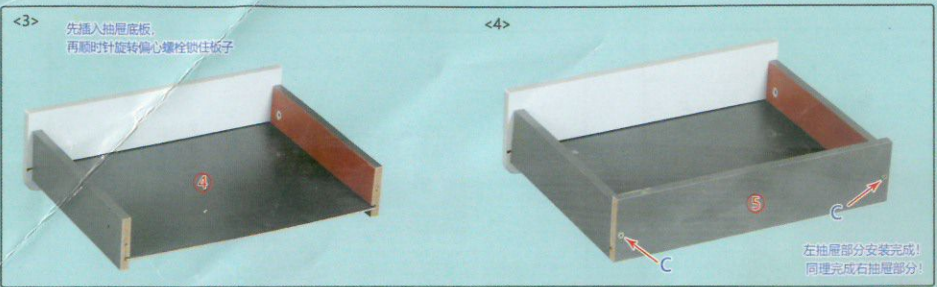
温馨提示：安装时螺丝拧七分紧，等全部完成后，再拧紧！
偏心件安装原理：



安装步骤：

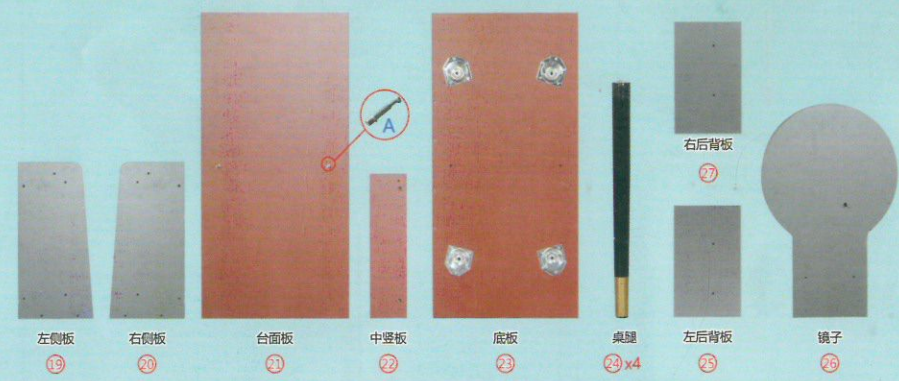
步骤1：抽屉部分安装



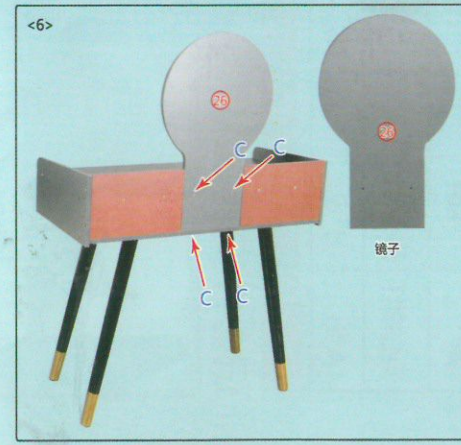
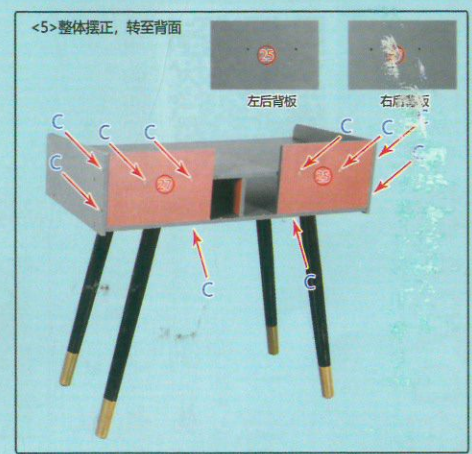
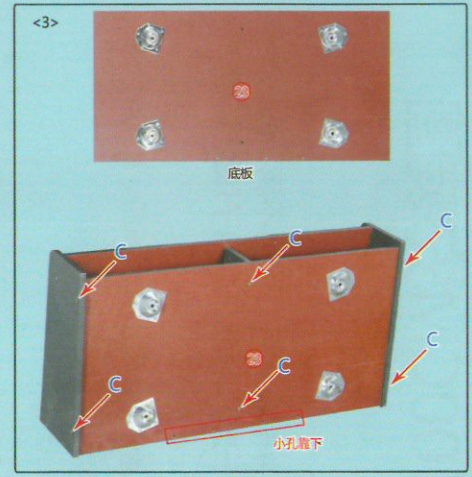
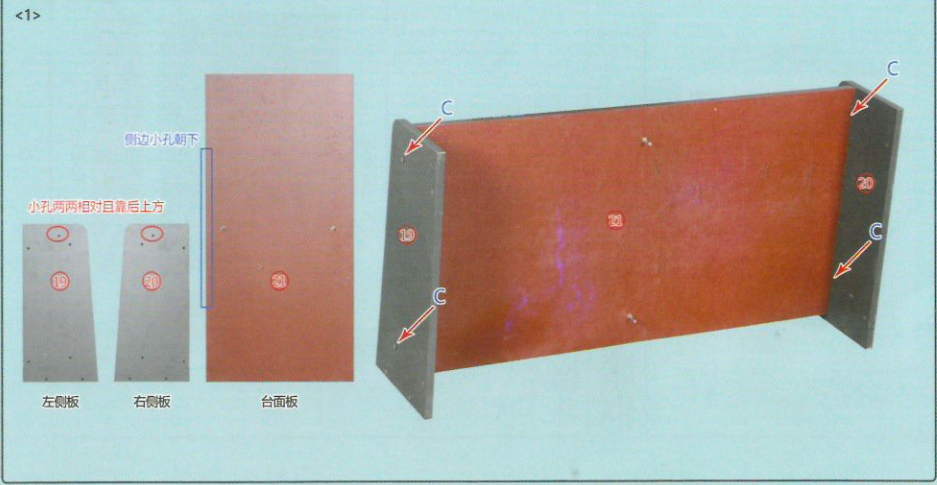


板子名称及序号：

安装图中的序号顺序并不是缺少板子，请只需对号安装即可。



步骤2：整体部分安装



HT-1900-100